



# Continua Health Alliance

*The Next Generation of Personal Telehealth is Here*

Ambient Assisted Living Forum, September 2010

Rick Clossen ([rick.a.clossen@intel.com](mailto:rick.a.clossen@intel.com))



“Our Mission is to establish an ecosystem of interoperable personal health systems that empower people & organizations to better manage their health and wellness”

Infant



Amateur Athlete



Diet/Fitness Focused



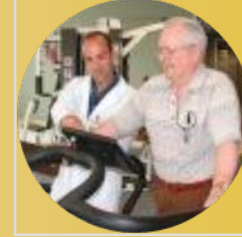
Worried Well



Chronic Patient



Acute Recovery



Elderly Living Independently



## CONTINUUM of LIFE

Continua Health Alliance enables a personal health eco-system that empowers individuals & families to better manage their own health and wellness across the continuum of life and care methods.

## CONTINUUM of CARE GIVERS

New Parents



Fitness Wellness Coach



The Family



Home Nursing Professional



Doctor/NP/Nurse



## Disease Management

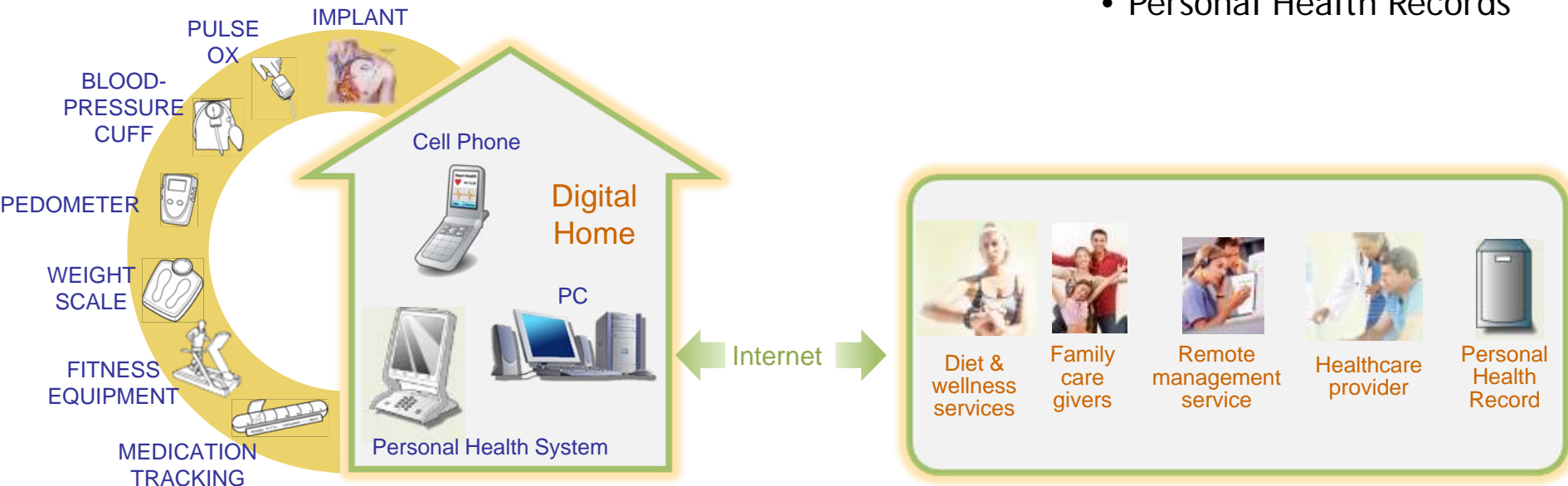
- Remote Patient Monitoring
  - Weight
  - Blood pressure
  - Glucose
  - Temperature
  - Spirometer data
- Wireless Network

## Aging Independently

- Medication Compliance
- Assisted Daily Living
  - Bed pressure (sleep)
  - Bathroom sensor
  - Gas / water sensor
  - Emergency sensor

## Health & Wellness

- Weight loss
- Fitness
- “Worried Well”
  - Weight
  - Blood pressure
  - Glucose
  - Cholesterol
  - Activity level
- Personal Health Records





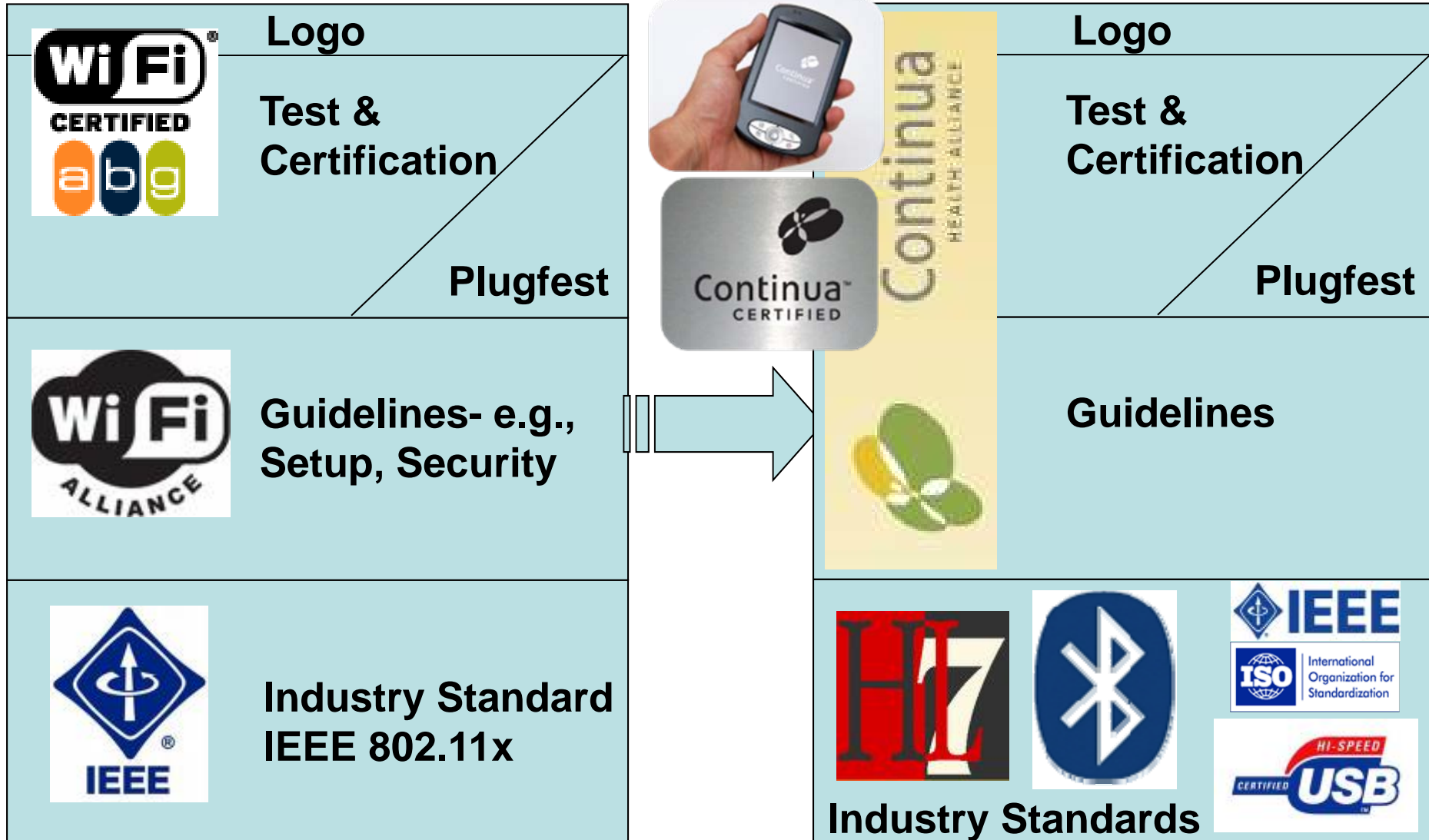
Continua  
HEALTH ALLIANCE





GE Healthcare





- Pendant/Panic event
- Smoke detector
- Fall detector
- Movement detector
- Property exit sensor
- Carbon monoxide
- Temperature sensor
- Enuresis sensor
- Bed occupancy sensor
- Chair sensor
- Medication minder

## Personal Device

Independent Living Activity



Pulse Oximeter



Pulse / Blood Pressure



Weight Scale



Glucose Meter



Cardio / Strength



Thermometer



Peak Flow



Adherence Monitor



Physical Activity



Insulin Pump



## Aggregation Manager



  
**ZigBee<sup>®</sup>**  
**Local Area Network (LAN) Interface**



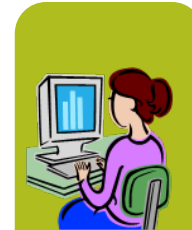
**Personal Area Network (PAN) Interface**



**W3C**

↑  
**Wide Area Network (WAN) Interface**

## Telehealth Service Center



↑  
**Health Record Network (HRN) Interface**

## Health Records



**EHR**

**PHR**





Continua Health Alliance device certification does not mean or imply that the device is legally marketable in any country; certification only assures that devices communicate in a standard fashion per Continua certification requirements and Guidelines. Refer to the device manufacturer or country Health Authority for specific details associated to device marketability or usage.



## **Networking**

**Working Groups**  
**Summits**

## **Connect Purchasers / Suppliers**

**Demonstration Opportunities**  
**RFP Matchmaker**  
**Event Representation**  
**Website Representation**

## **Development Tools**

**Guidelines**  
**Source Code (CESL)**  
**Test Tool**  
**Plugfests**  
**Test and Cert Program**

## **Market Information**

**Industry Analysis**  
**Education**



## Renewing Health Project

Remote Patient Monitoring for 7,800 patients in 9 European regions  
Continua runs the Industry Advisory Board

## Smart Personal Health project

Promotion of PHS interoperability in Europe  
Continua partners with IHE, ETSI, empirica, The Centre

### 2009 Announcement



### 2010 Continua Certified Products





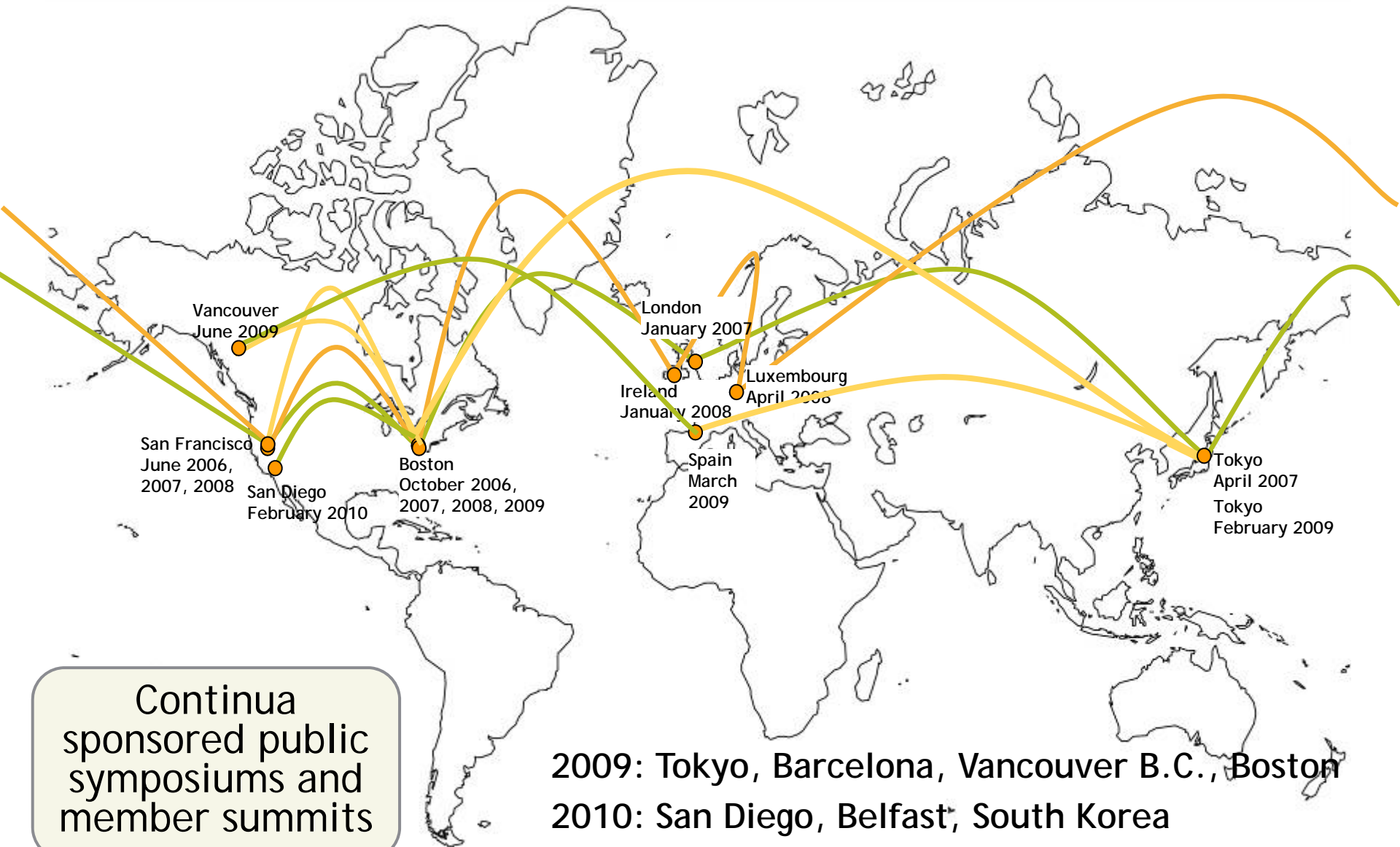
# China Launch Press Event- Q310

全



共创  
人人健康







- Simplicity vice Complexity
- International vice Regional
- Expediency vice Additional Capability
- Interoperability vice Flexibility
- Guidelines vice Standards

# Closing Summary



Focus on Individual

Industry Standards



End to End Architecture





Thank you!